

University of North Carolina Charlotte Spatially-Enabling Facility Management with ESRI and ARCHIBUS



THE CHALLENGE

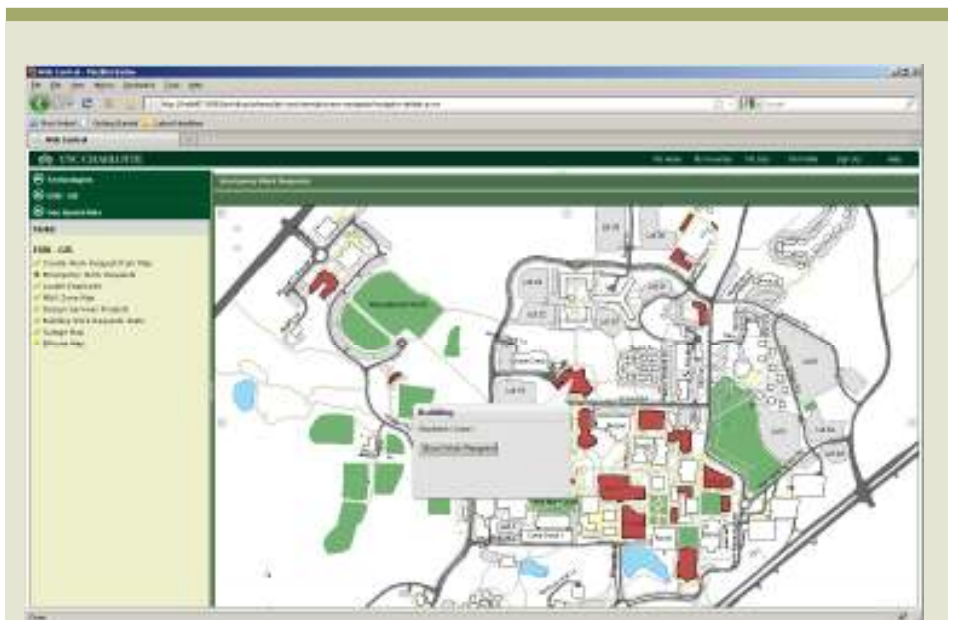
The University of North Carolina at Charlotte (UNCC) needed an integrated view of their facilities from the perspective of campus-wide workflows and assets. The original intent was to locate buildings, equipment and grounds on campus to help them maximize the efficiency of work order execution, but this quickly expanded once the capabilities of the technology were understood.

THE SOLUTION

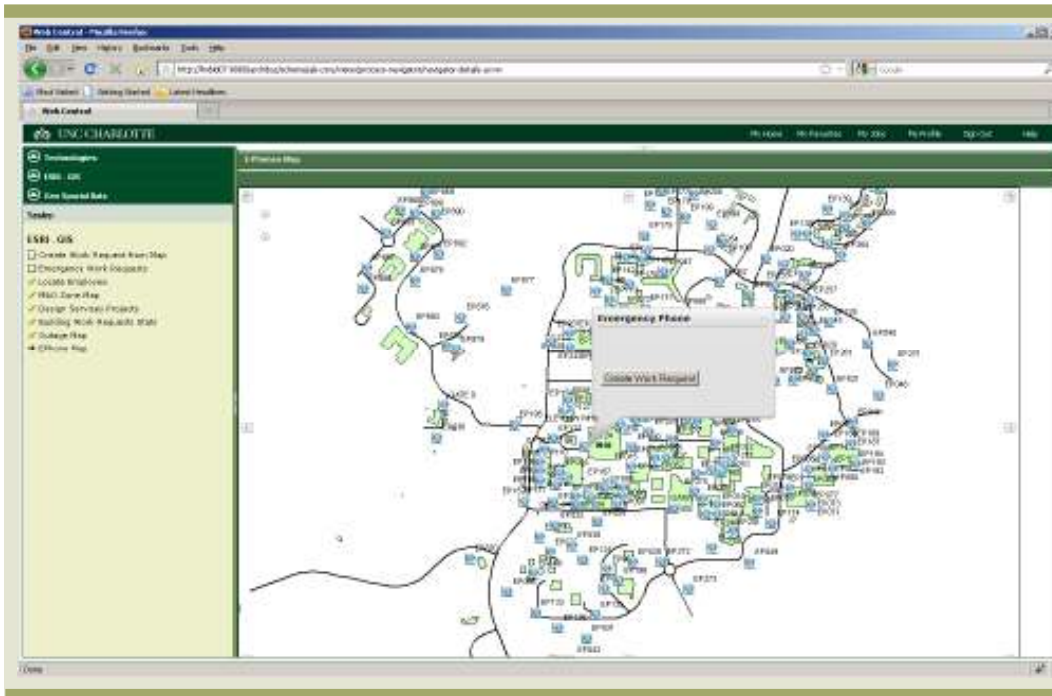
Using their expertise in spatially-enabling facilities, PenBay Solutions (PenBay), Esri and ARCHIBUS worked as a team to develop a solution for UNCC that provided spatial insight into their work processes and asset life cycles.

The solution provides Esri-hosted ArcGIS map services integrated with ARCHIBUS Web Central. ARCHIBUS users can automatically locate facilities inside the US, Canada and Europe based on data already captured in ARCHIBUS. Detailed property, facility and financial information allows managers to see trends and realign expensive operational resources where needed. With their expertise in geospatial consulting and development and computer-aided facility management (CAFM) integration, PenBay has created an enterprise GIS platform for the solution.

The University of North Carolina at Charlotte sees the value in providing a geographic view to its facilities data. The initial intent of the project was to simply locate all buildings, equipment and grounds to help with work order execution, but the extensive capabilities of the technology quickly expanded the scope.



CREATE WORK REQUEST FROM THE MAP



CAMPUS-WIDE ASSET
 MAPPING
 (EMERGENCY PHONE)

UNCC has licensed the solution to provide a geographic view to its facility data. Using ARCHIBUS Web Central and Esri's ArcGIS Server, they can spatially-enable facility management workflows. PenBay has supported the team to deliver:

- An enterprise GIS by installing and configuring ArcGIS Server Advanced Enterprise Edition and the ARCHIBUS Geospatial Module for Esri.
- Custom tools and libraries using the ArcGIS Server Java Script API
- Integration of those GIS tools with existing and newly created ARCHIBUS (CAFM) views
- Enable support for additional overall integration with UNCC's Building Automation System

As a result of this project, distinct workflows for use by UNCC facility managers and others on campus include:

- Employee location to the building and room level
- Work requests produced from maps by building total, dollar value and work order system
- Map-based visualization of design services projects (i.e. project costs)
- E-phone location and status

“ With the work that PenBay provided, we are able to interact with a 3D representation of the buildings on campus, as well as visually query our assets. Being able to link to the University's Building Automation System is providing us with the ability to pull together a completely integrated perspective of our facilities. ”

Ray Dinello, Director of Facilities Information



penbaysolutions

Headquarters

14 Maine St., Suite 100, Box 77
 Brunswick, Maine 04011
 Tel. 207-230-0182

Virginia

8615 Westwood Center Drive,
 Vienna, Virginia 22182
 Tel. 703-270-8480

New York City

75 Broad St. Suite 400,
 New York, NY 10004
 Tel. 917-403-5488

